

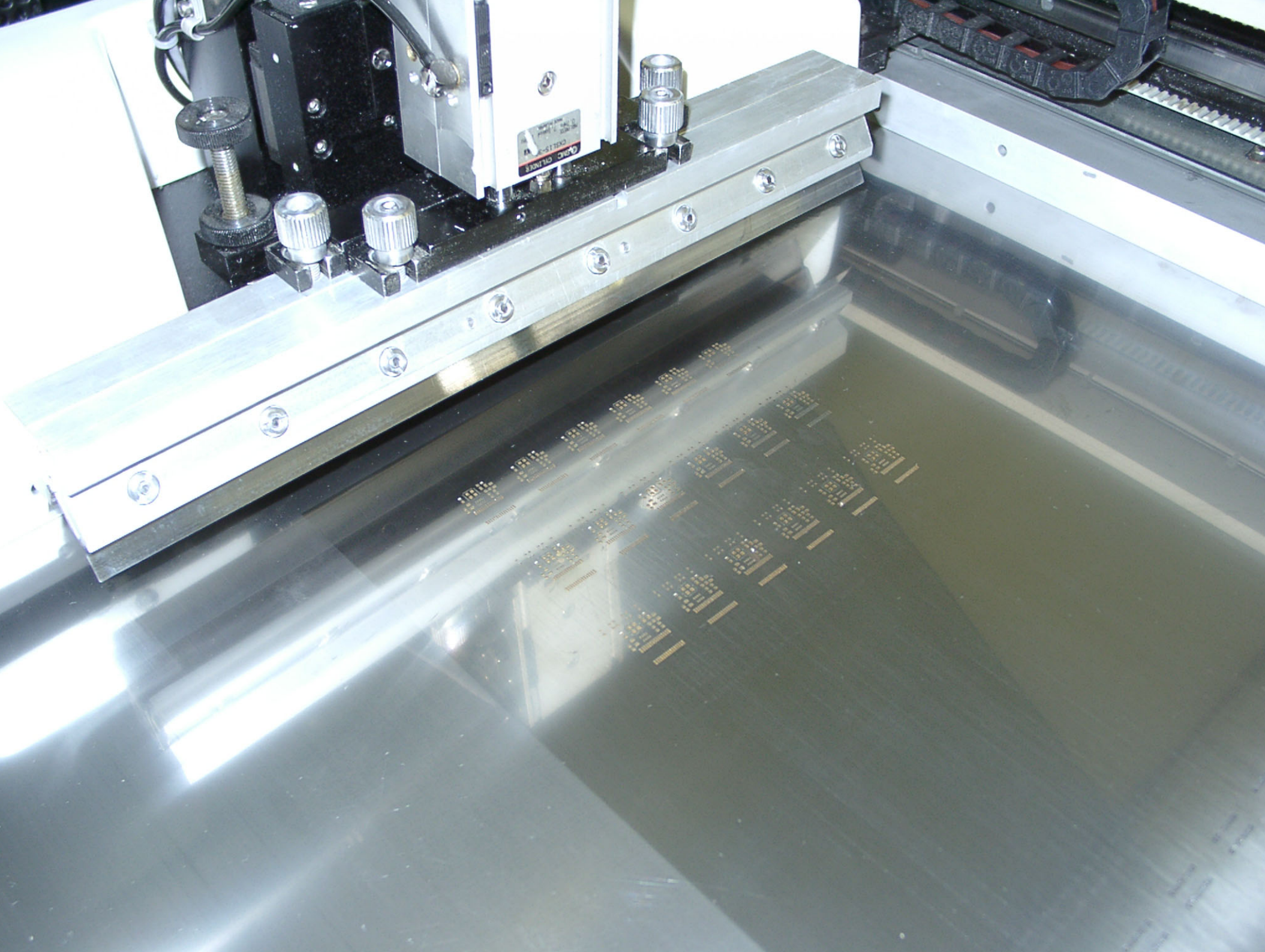
Optohybrid Substrate Assembly

Chip & Byte DATENTECHNIK GES. M.B.H.

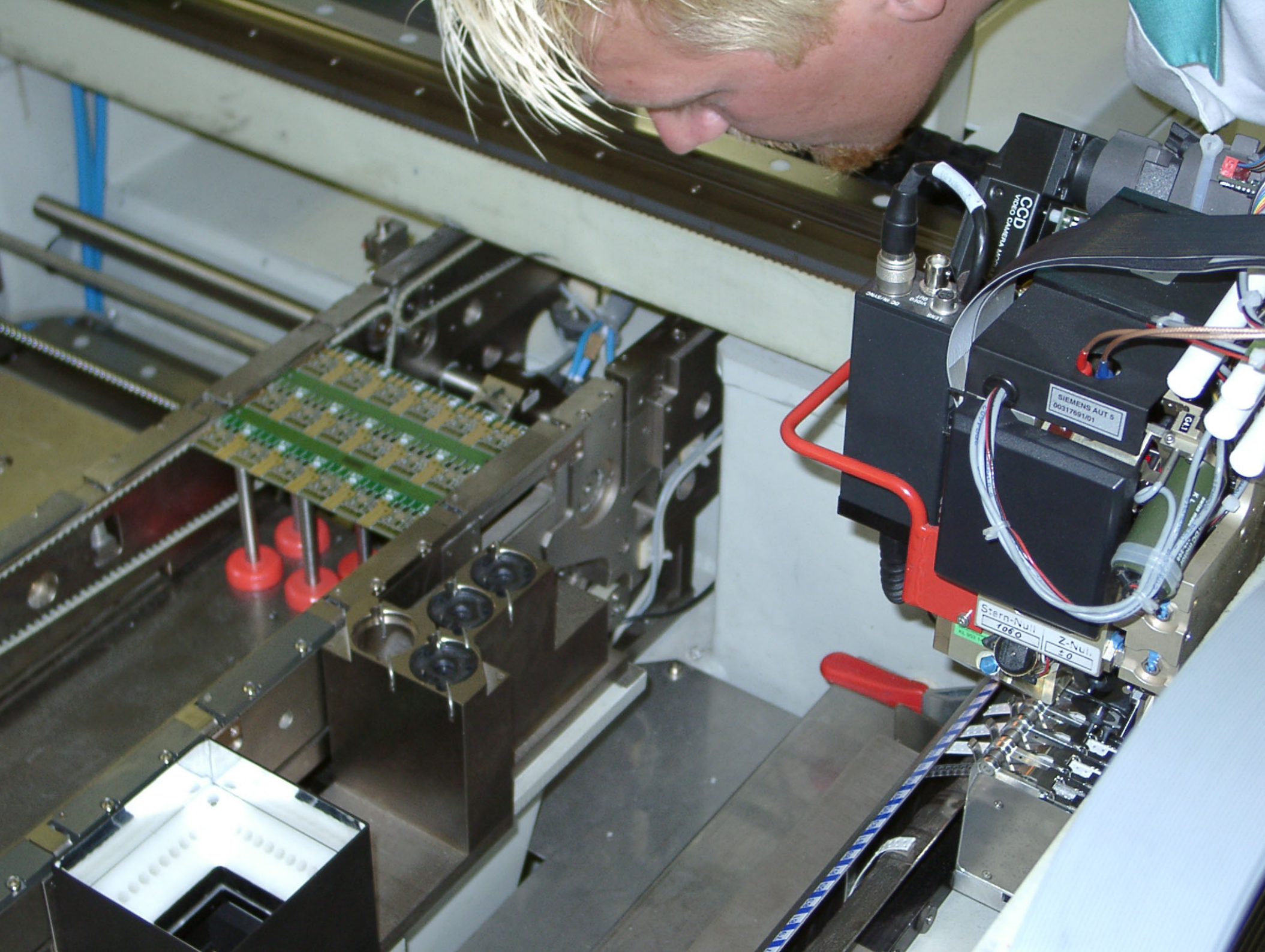
June 10, 2002

1. Applying Solder Paste

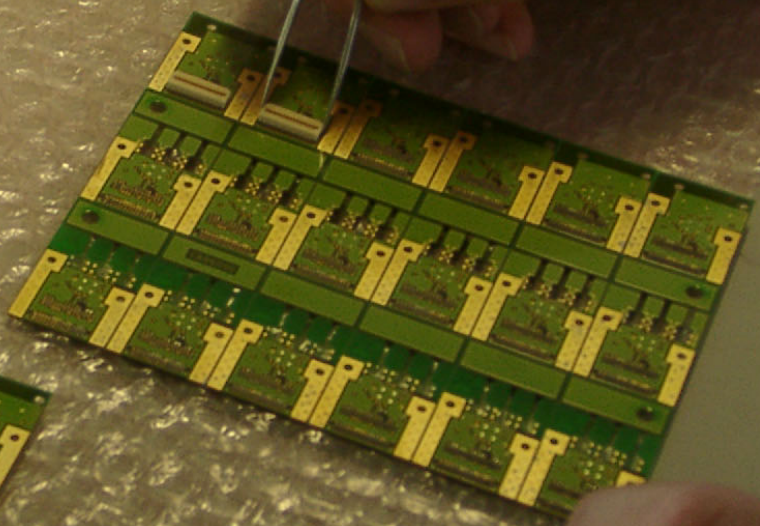
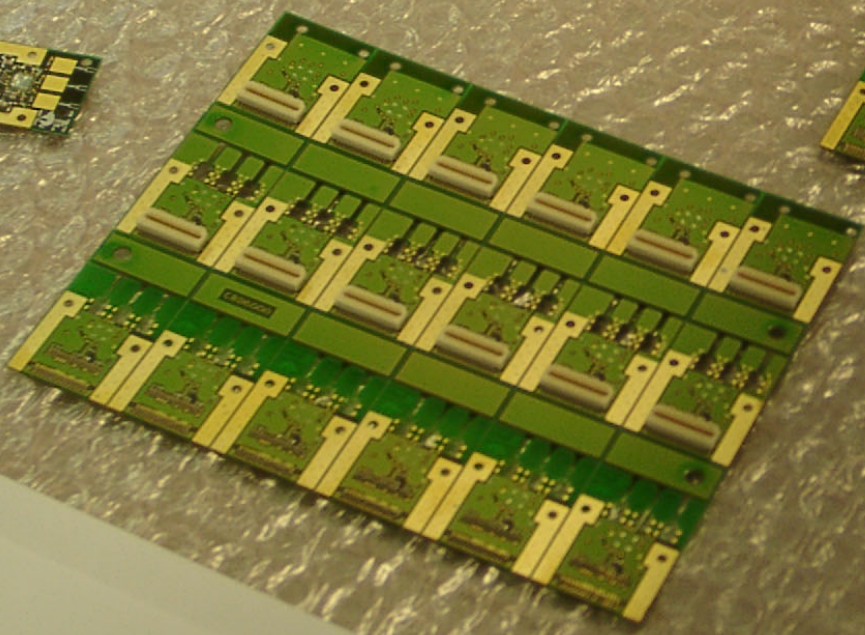
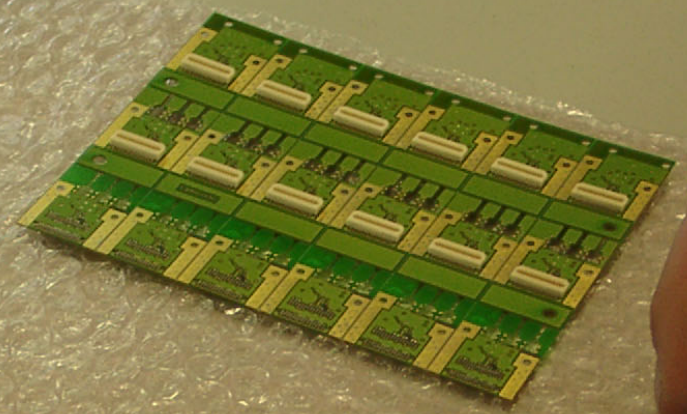
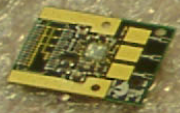
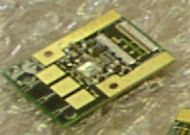




2. Picking & placing components



x 100000 Stück
SS-LASER-DRIVER
bestell 100000 Stück

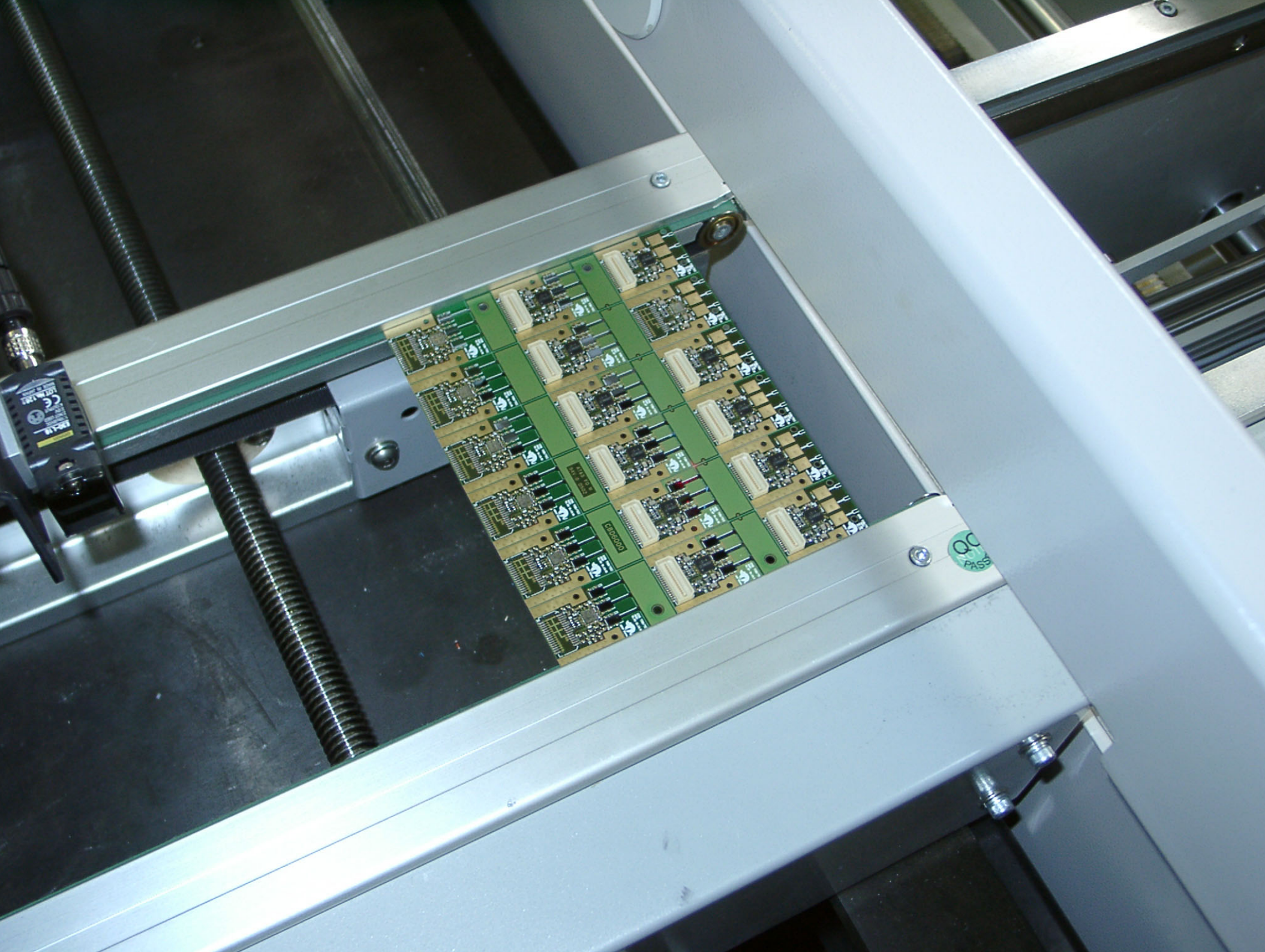


PHYSIK
ANSCHAFTEN

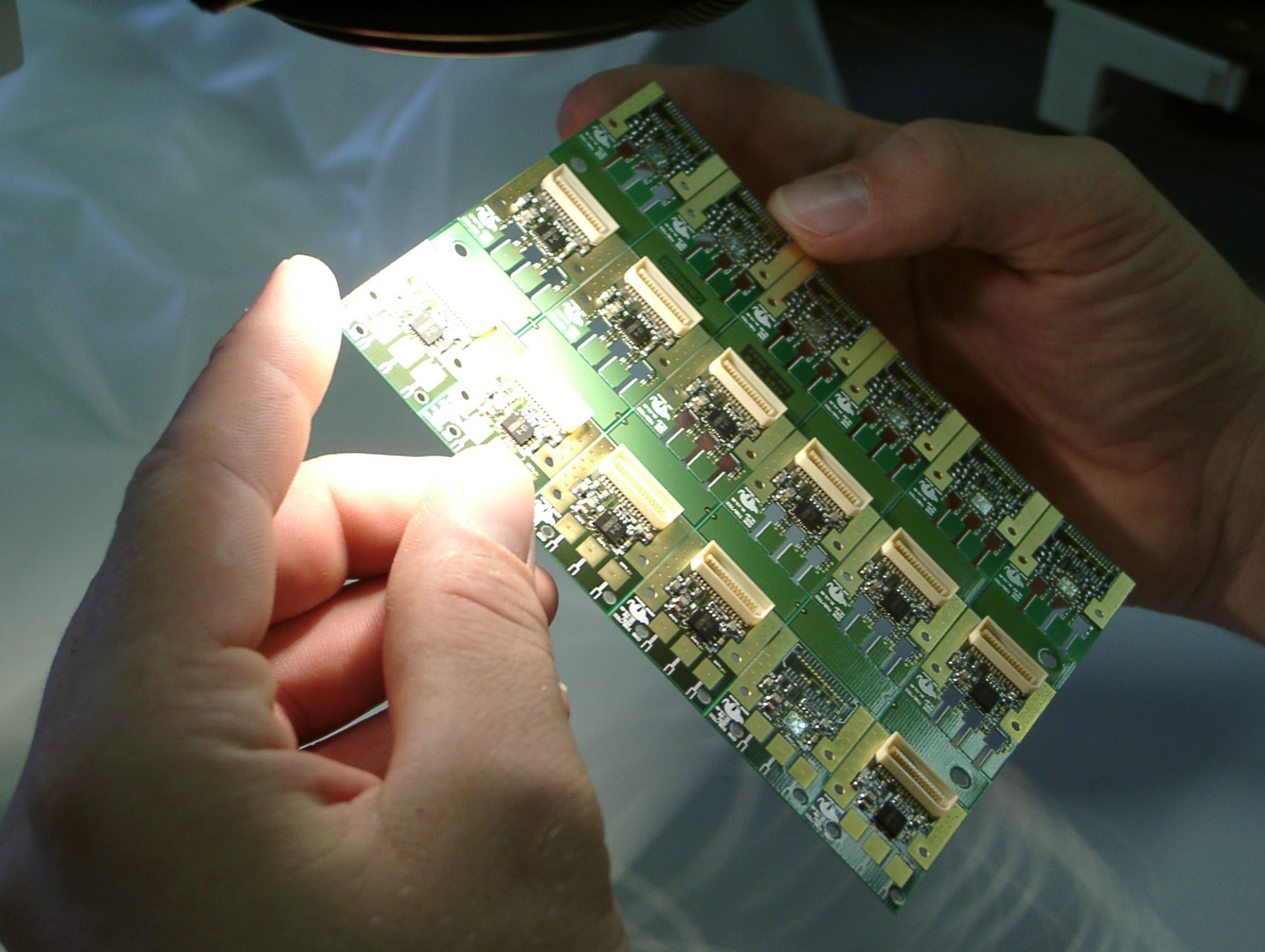
0 10 20 30 40
20 20 20 20 20
20 20 20 20 20
20 20 20 20 20
20 20 20 20 20

3. Reflow oven





4. Visual inspection



5. PCB cutting



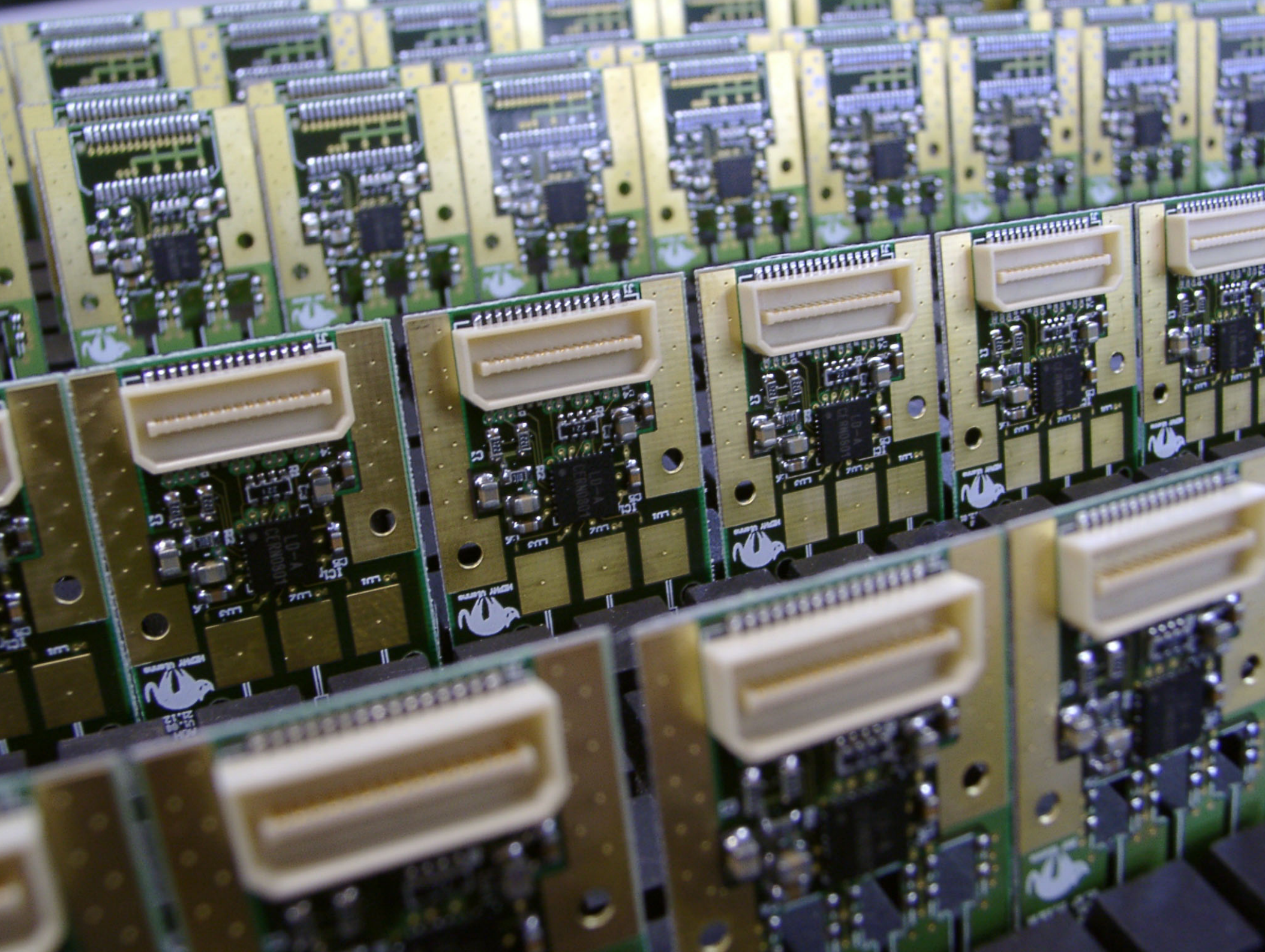
MAESTRO 4M

home

0

100

200



6. Substrate validation



PHILIPS

gespart

ASUS 5000

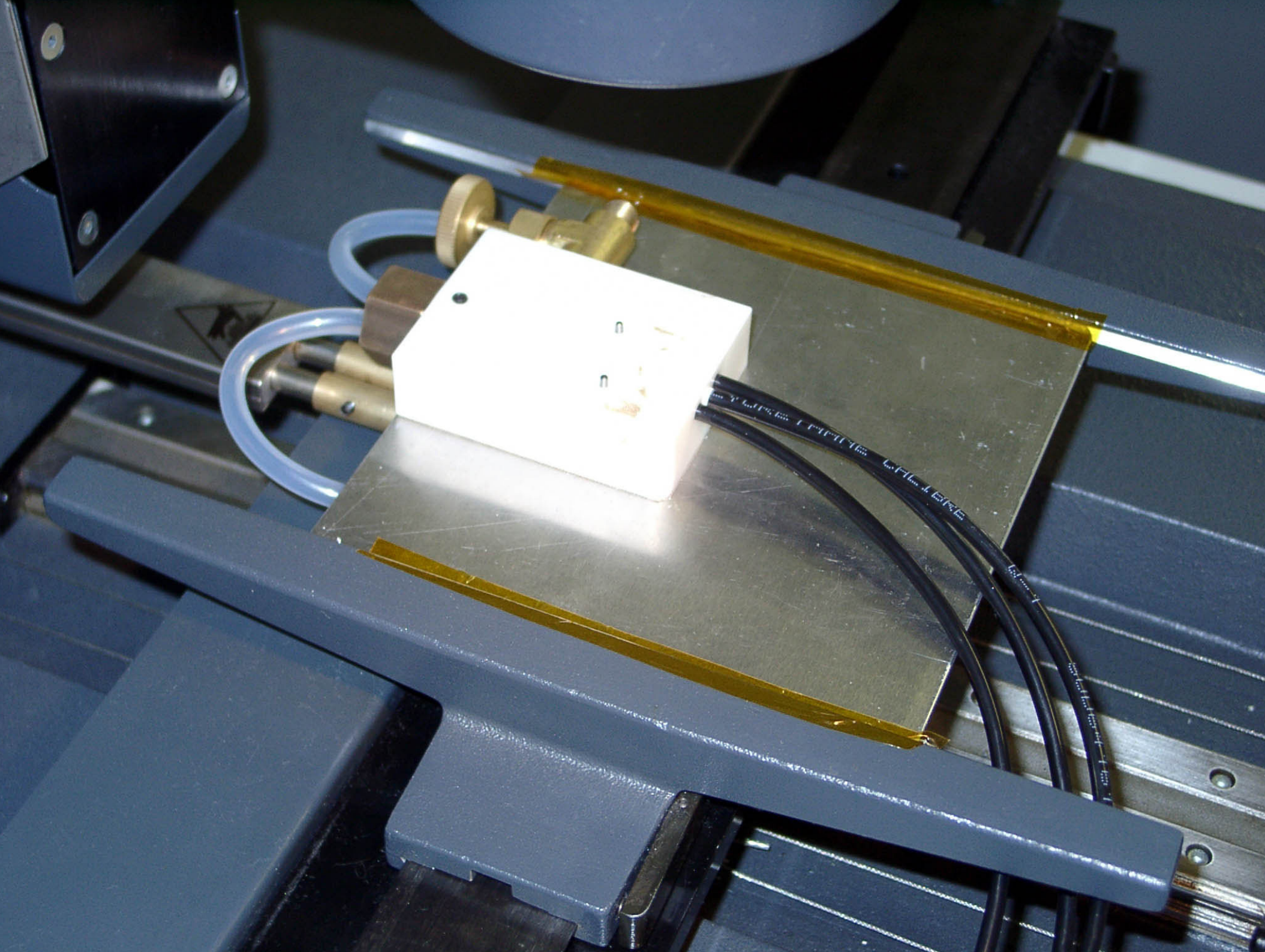
50

SHIPPING MARK
NDS
C/NO.
MADE IN CHINA

66 AOH substrates

100% OK w/o repair!!!

7. Soldering process setup





**60 AOH w/ lasers
expected back
end of June 2002**